

JULY 1, 2010 - JUNE 30, 2011 PRECEPTEES
Listed are Fellows of the
Fellowship of Minimally Invasive Gynecologic Surgery

 <p>ADIO "BEN" I. ABDU, M.D. <i>(2010-2012 Fellow)</i></p> <p>MATCHED WITH: J. STEPHEN RICH, M.D. ROBERT S. FURR, M.D. Women's Surgery Center Chattanooga, Tennessee (Two-Year Program)</p>	 <p>UCHENNA C. ACHOLONU, JR., M.D. <i>(2010-2011 Fellow)</i></p> <p>MATCHED WITH: FARR NEZHAT, M.D. St. Luke's-Roosevelt Hospital Center New York, New York (One-Year Program)</p>
 <p>DEBORAH ARDEN, M.D. <i>(2009-2011 Fellow)</i></p> <p>MATCHED WITH: TED T. LEE, M.D. SUKETU M. MANSURIA, M.D. University of Pittsburgh School of Medicine Pittsburgh, Pennsylvania (Two-Year Program)</p>	 <p>AMY J. ASATO, M.D. <i>(2010-2011 Fellow)</i></p> <p>MATCHED WITH: ERNEST G. LOCKROW, D.O. ALBERT J. STEREN, M.D. Walter Reed Army Medical Center and National Naval Medical Center Washington, D.C. (One-Year Program)</p>
 <p>SHAN M. BISCETTE, M.D. <i>(2010-2012 Fellow)</i></p> <p>MATCHED WITH: JAMES M. SHWAYDER, M.D., J.D., RESAD P. PASIC, M.D., PH.D., JONATHAN H. REINSTINE, M.D. University of Louisville School of Medicine Louisville, Kentucky (Two-Year Program)</p>	 <p>AMBER D. BRADSHAW, M.D. <i>(2009-2011 Fellow)</i></p> <p>MATCHED WITH: ARNOLD P. ADVINCULA, M.D. STEVEN D. MCCARUS, M.D. The Center for Specialized Gynecology, University of Central Florida College of Medicine at Florida Hospital-Celebration Health, Celebration, Florida (Two-Year Program)</p>
 <p>ERIN T. CAREY, M.D. <i>(2010-2012 Fellow)</i></p> <p>MATCHED WITH: JOHN F. STEEGE, M.D. University of North Carolina Chapel Hill, North Carolina (Two-Year Program)</p>	 <p>MARIO E. CASTELLANOS, M.D. <i>(2010-2012 Fellow)</i></p> <p>MATCHED WITH: MICHAEL HIBNER, M.D., PH.D. St. Joseph's Hospital and Medical Center Phoenix, Arizona (Two-Year Program)</p>
 <p>SHAO-CHUN ROSE CHANG-JACKSON, M.D. <i>(2010-2011 Fellow)</i></p> <p>MATCHED WITH: FARR NEZHAT, M.D. St. Luke's-Roosevelt Hospital Center New York, New York (One-Year Program)</p>	 <p>SARAH L. COHEN, M.D. <i>(2010-2012 Fellow)</i></p> <p>MATCHED WITH: JON I. EINARSSON, M.D., MPH Brigham and Women's Hospital Boston, Massachusetts (Two-Year Program)</p>
 <p>LIZA M. COLIMON, M.D. <i>(2009-2011 Fellow)</i></p> <p>MATCHED WITH: GEORGINE LAMVU, M.D., MPH Florida Hospital Orlando, Orlando, Florida (Two-Year Program)</p>	 <p>HOWARD L. CURLIN, M.D. <i>(2010-2012 Fellow)</i></p> <p>MATCHED WITH: TED L. ANDERSON, M.D., PH.D. Vanderbilt University Medical Center Nashville, Tennessee (Two-Year Program)</p>



SHABNAM DADGAR, M.D.
(2010-2011 Fellow)

MATCHED WITH:
CEANA H. NEZHAT, M.D.
Atlanta Center for Special Pelvic Surgery
and Reproductive Medicine
Atlanta, Georgia
(One-Year Program)



MARISA DAHLMAN, M.D.
(2010-2012 Fellow)

MATCHED WITH:
DAVID I. EISENSTEIN, M.D.
Henry Ford Medical Group
Detroit, Michigan
(Two-Year Program)



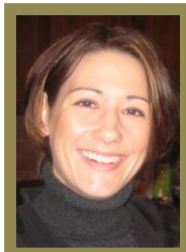
MEGAN A. DAW, M.D.
(2010-2012 Fellow)

MATCHED WITH:
CHARLES E. MILLER, M.D.
Advocate Lutheran General Hospital
Naperville, Illinois
(Two-Year Program)



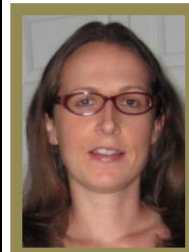
NICOLE M. DONNELLAN, M.D.
(2010-2012 Fellow)

MATCHED WITH:
TED T. LEE, M.D.,
SUKETU M. MANSURIA, M.D.
University of Pittsburgh School of Medicine
Pittsburgh, Pennsylvania
(Two-Year Program)



JESSICA B. H. FERANEC, M.D.
(2010-2012 Fellow)

MATCHED WITH:
GEORGINE LAMVU, M.D., MPH
Florida Hospital Orlando
Orlando, Florida
(Two-Year Program)



TARYN N. GALLO, M.D.
(2010-2011 Fellow)

MATCHED WITH:
MASOUD AZODI, M.D.
Yale Gynecologic Oncology
New Haven, Connecticut
(One-Year Program)



LYDIA E. GARCIA, M.D.
(2010-2011 Fellow)

MATCHED WITH:
KEITH B. ISAACSON, M.D.
MIGS, Newton Wellesley Hospital
Boston, Massachusetts
(One-Year Program)



JOSEPH M. GOVERN, M.D.
(2010-2011 Fellow)

MATCHED WITH:
ERNEST G. LOCKROW, D.O.
ALBERT J. STEREN, M.D.
Walter Reed Army Medical Center and
National Naval Medical Center
Washington, D.C.
(One-Year Program)



MONA GOMAA, M.D.
(2010-2011 Fellow)

MATCHED WITH:
CAMRAN R. NEZHAT, M.D.
Center for Special Minimally Invasive and
Robotic Surgery, Stanford University
Medical School
Palo Alto, California
(One-Year Program)



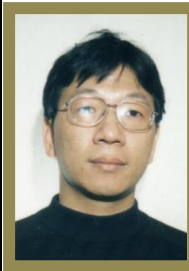
CLAIRE H. GOULD, M.D.
(2010-2012 Fellow)

MATCHED WITH:
MICHAEL S. COLLINS, M.D.
Portland Obstetrics & Gynecology Associates
Portland, Oregon
(Two-Year Program)



MINDA A. GREEN, M.D.
(2009-2011 Fellow)

MATCHED WITH:
CARL R. DELLA BADIA, D.O.
Drexel University College of Medicine
Philadelphia, Pennsylvania
(Two-Year Program)



XIAOMING GUAN, M.D.
(2010-2012 Fellow)

MATCHED WITH:
ROBERT K. ZURAWIN, M.D.
Baylor College of Medicine
Houston, Texas
(Two-Year Program)



NADIM N. HAWA, M.D.
(2010-2011 Fellow)

MATCHED WITH:
JAMES K. ROBINSON, M.D., M.S.
Medical Faculty Associates
The George Washington University
Medical Center
Washington, D.C.
(One-Year Program)



MARK R. HOFFMAN, M.D.
(2010-2012 Fellow)

MATCHED WITH:
SAWSAN AS-SANIE, M.D.,
ARLEEN SONG, M.D.
University of Michigan
Ann Arbor, Michigan
(Two-Year Program)



LOUISE PERKINS KING, M.D.
(2010-2012 Fellow)

MATCHED WITH:
CAMRAN R. NEZHAT, M.D.
Center for Special Minimally Invasive and
Robotic Surgery, Stanford University
Medical School
Palo Alto, California
(Two-Year Program)



JAMIE KROFT, M.D.
(2010-2011 Fellow)

MATCHED WITH:
ROSE C. KUNG, M.D.
HERBERT WONG, M.D.
Sunnybrook Health Science Centre, affiliated
with the University of Toronto
Toronto, Ontario, Canada
(One-Year Program)



RACHEL LAMONICA, D.O.
(2009-2011 Fellow)

MATCHED WITH:
ANTHONY A. LUCIANO, M.D.
DANIELLE E. LUCIANO, M.D.
The Hospital of Central Connecticut
New Britain General Campus
New Britain, Connecticut
(Two-Year Program)



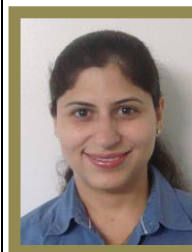
ANWAR M. MORIA, M.D.
(2010-2011 Fellow)

MATCHED WITH:
TOGAS TULANDI, M.D., MHCM
McGill University
Montreal, Quebec, Canada
(One-Year Program)



ABDEL KARIM NAWFAL, M.D.
(2009-2011 Fellow)

MATCHED WITH:
DAVID I. EISENSTEIN, M.D.
Henry Ford Medical Group
Detroit, Michigan
(Two-Year Program)



NAVPRIYA OBEROI, M.D.
(2011-2012 Fellow)

MATCHED WITH:
PRABHAT K. AHLUWALIA, M.D.
Women's Laser Treatment Center, St. Elizabeth
Medical Center, Utica, New York
(Two-Year Program)



CHRISTOPHER J. PUGH, D.O.
(2009-2011 Fellow)

MATCHED WITH:
DAN C. MARTIN, M.D.
AHMAD AZARI, M.D.
University of Tennessee Medical Group
Memphis, Tennessee
(Two-Year Program)



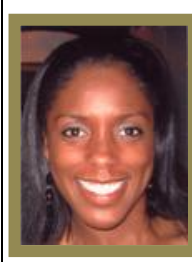
AZRA SADIKOVIC, M.D.
(2010-2011 Fellow)

MATCHED WITH:
MARK D. LEVIE, M.D.
SCOTT G. CHUDNOFF, M.D.
Centennial Women's Center
Bronx, New York
(One-Year Program)



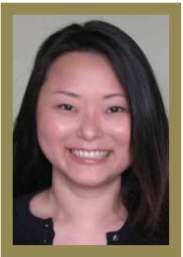
BRETT A. HIGBIE SCHULTZ, D.O.
(2009-2011 Fellow)

MATCHED WITH:
PRABHAT K. AHLUWALIA, M.D.
Women's Laser Treatment Center, St.
Elizabeth Medical Center, Utica, New York
(Two-Year Program)



JESSICA SHEPHERD, M.D.
(2009-2011 Fellow)

MATCHED WITH CO-DIRECTORS:
JAMES M. SHWAYDER, M.D., J.D.,
RESAD P. PASIC, M.D., PH.D.,
JONATHAN H. REINSTINE, M.D.
University of Louisville School of Medicine
Louisville, Kentucky
(Two-Year Program)



JA HYUN SHIN, M.D.
(2010-2011 Fellow)

MATCHED WITH:
FRED M. HOWARD, M.S., M.D.
University of Rochester School of Medicine &
Dentistry, Rochester, New York
(One-Year Program)



MATTHEW T. SIEDHOFF, M.D.
(2009-2011 Fellow)

MATCHED WITH:
JOHN F. STEEGE, M.D.
University of North Carolina
Chapel Hill, North Carolina
(Two-Year Program)



BETHANY D. SKINNER, M.D.
(2009-2011 Fellow)

MATCHED WITH:
GREGORY J. RAFF, M.D.
University Ob/Gyn, Inc.
Indianapolis, Indiana
(Two-Year Program)



NOAM SMORGICK ROSENBAUM, M.D.
(2010-2011)

MATCHED WITH:
SAWSAN AS-SANIE, M.D.,
ARLEEN SONG, M.D.
University of Michigan
Ann Arbor, Michigan
(Two-Year Program)



KIMBERLY A. SWAN, M.D.
(2009-2011 Fellow)

MATCHED WITH:
ARNOLD P. ADVINCULA, M.D.
STEVEN D. MCCARUS, M.D.
The Center for Specialized Gynecology,
University of Central Florida College of
Medicine at Florida Hospital-Celebration
Health, Celebration, Florida
(Two-Year Program)



WENDELLY J. VASQUEZ, M.D.
(2010-2011 Fellow)

MATCHED WITH:
MARK D. LEVIE, M.D.
SCOTT G. CHUDNOFF, M.D.
Centennial Women's Center
Bronx, New York
(One-Year Program)