

FELLOWSHIP OF MINIMALLY INVASIVE GYNECOLOGIC SURGERY

MATH RESULTS

July 1, 2012 - June 30, 2013



FRANCISCO AGUIRRE, M.D.

MATCHED WITH:
TED L. ANDERSON, M.D., PH.D.
Vanderbilt University Medical Center
Nashville, Tennessee



MIRIAM ANG, M.D.

MATCHED WITH:
ROSE C. KUNG, M.D.,
HERBERT M. WONG, M.D.
Sunnybrook Health Science Centre, affiliated
with the University of Toronto
Toronto, Ontario, Canada



JORGE F. CARRILLO, M.D.

MATCHED WITH:
FRED M. HOWARD, M.D.
ADAM M. GRIFFIN, M.D.
University of Rochester School of Medicine
& Dentistry, Rochester, New York



DINA J. CHAMSY, M.D.

MATCHED WITH:
TED T. LEE, M.D.
SUKETU M. MANSURIA, M.D.
University of Pittsburgh School of Medicine
Pittsburgh, Pennsylvania



ANDREA L. CHEN, M.D.

MATCHED WITH:
MICHAEL HIBNER, M.D., PH.D.
NITA A. DESAI, M.D.
St. Joseph's Hospital and Medical Center
Phoenix, Arizona



PALAK K. DOSHI, D.O.

MATCHED WITH:
THOMAS L. LYONS M.D.
The Center for Women's Care and
Reproductive Surgery
Atlanta, Georgia



ERICA C. DUN, M.D.

MATCHED WITH:
CEANA H. NEZHAT, M.D.
Atlanta Center for Special Pelvic Surgery and
Reproductive Medicine, Atlanta, Georgia



LENA EL HACHEM, M.D.

MATCHED WITH:
HERBERT F. GRETZ, III, M.D.
The Mount Sinai Medical Center
New York, New York



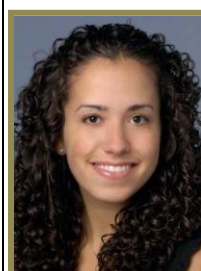
NADIA A. GOMEZ, M.D.

MATCHED WITH:
GEORGINE LAMVU, M.D., MPH
Florida Hospital Orlando
Orlando, Florida



MARYAM S. HADIASHAR, M.D.

MATCHED WITH:
J. STEPHEN RICH, M.D.
ROBERT S. FURR, M.D.
Women's Surgery Center
Chattanooga, Tennessee



KUMARI A. HOBBS, M.D.

MATCHED WITH:
JOHN F. STEEGE, M.D.
University of North Carolina
Chapel Hill, North Carolina



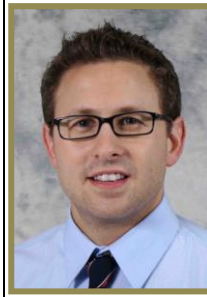
SUSAN S. KHALIL, M.D.

MATCHED WITH:
FARR NEZHAT, M.D.
St. Luke's-Roosevelt Hospital Center
New York, New York



THOMAS G. LANG, M.D.

MATCHED WITH:
JAMES M. SHWAYDER, M.D., J.D.,
RESAD P. PASIC, M.D., PH.D.,
JONATHAN H. REINSTINE, M.D.
University of Louisville School of Medicine
Louisville, Kentucky



ERIC C. LIBERMAN, D.O.

MATCHED WITH:
MARK D. LEVIE, M.D.,
SCOTT G. CHUDNOFF, M.D.
Centennial Women's Center
Bronx, New York



COURTNEY S. LIM, M.D.

MATCHED WITH:
SAWSAN AS-SANIE, M.D.,
University of Michigan
Ann Arbor, Michigan



ELMIRA MANOUCHERI, M.D.

MATCHED WITH:
JON I. EINARSSON, M.D., MPH
Brigham and Women's Hospital
Boston, Massachusetts



GULDEN MENDERES, M.D.

MATCHED WITH:
MASOUD AZODI, M.D.
Yale Gynecologic Oncology
New Haven, Connecticut



JACQUALIN M. MILLER, D.O.

MATCHED WITH:
CAMRAN R. NEZHAT, M.D.
Center for Special Minimally Invasive and
Robotic Surgery, Stanford University
Medical School
Palo Alto, California



JOHN J. NAVAS, M.D.

MATCHED WITH:
DAVID L. ZISOW, M.D.
Northwest Hospital Center
Forest Hill, Maryland



CEYDA ONER, M.D.

MATCHED WITH:
CEANA H. NEZHAT, M.D.
Atlanta Center for Special Pelvic Surgery and
Reproductive Medicine
Atlanta, Georgia



MICHELLE G. PARK, M.D.

MATCHED WITH:
KEITH B. ISAACSON, M.D.
MIGS, Newton Wellesley Hospital
Boston, Massachusetts



JESSICA M. B. RITCH, M.D.

MATCHED WITH:
BARRY K. JARNAGIN, M.D.
Center for Pelvic Health
Franklin, Tennessee



CARA A. ROBINSON, M.D.

MATCHED WITH:
TED T. LEE, M.D.
SUKETU M. MANSURIA, M.D.
University of Pittsburgh School of Medicine
Pittsburgh, Pennsylvania



KIRSTEN J. SASAKI, M.D.

MATCHED WITH:
CHARLES E. MILLER, M.D.
Advocate Lutheran General Hospital
Naperville, Illinois



LAUREN D. SCHIFF, M.D.

MATCHED WITH:
DAVID I. EISENSTEIN, M.D.
Henry Ford Medical Group
Detroit, Michigan



AMANDA L. STEVENS, M.D.

MATCHED WITH:
CAMRAN R. NEZHAT, M.D.
Center for Special Minimally Invasive and
Robotic Surgery,
Stanford University Medical School
Palo Alto, California



MARIA TERESA TAM, M.D.

MATCHED WITH:
GERALD J. HARKINS, M.D.
Penn State Milton S. Hershey Medical Center
Hershey, Pennsylvania



EDWARD P. TANGCHITNOB, M.D.

MATCHED WITH:
BRUCE S. KAHN, M.D.
Scripps Clinic
San Diego, California



MIREILLE D. TRUONG, M.D.

MATCHED WITH:
LARRY R. GLAZERMAN, M.D.
USF College of Medicine
Tampa, Florida



ASTRID R. VON-WALTER, M.D.

MATCHED WITH:
JAMES K. ROBINSON, M.D.
Medical Faculty Associates
The George Washington University Medical
Center, Washington, D.C.