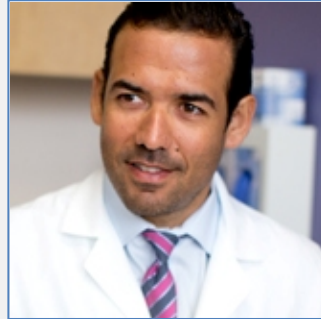


Medical Faculty Associates, Division of Gynecology  
George Washington University  
Washington, District of Columbia

## AAGL OBSERVERSHIP PROGRAM



**CHERIE Q. MARFORI, MD**  
Director of Fellowship



**GABY MOAWAD, MD**  
Associate Director of Fellowship

### Program Description

We are benign gynecologists who take care of a diverse patient population with diseases across the gynecologic spectrum (fibroids, endometriosis, polyps, Mullerian anomalies, prolapse, prophylactic hyst/oophorectomy). Our surgical approaches include advanced hysteroscopic, laparoscopic, robotic, vaginal, single-port, and 2-port cases. Dr. Marfori's preferred modality is conventional laparoscopy while Dr. Moawad prefers Robotics.

**Preferred length of visit:** 1-4 Days

